



Joydens Wood Infant School

Supporting pupils with medical conditions policy

Updated: September 2020

This policy is written in line with the requirements of:-

Children and Families Act 2014 - section 100

Supporting pupils at school with medical conditions: statutory guidance for governing bodies of maintained schools and proprietors of academies in England, DfE Sept 2014

0-25 SEND Code of Practice, DfE 2014

Mental Health and behaviour in schools: departmental advice for school staff, DfE June 2014

Equalities Act 2010

Schools Admissions Code, DfE 1 Feb 2010

This policy should be read in conjunction with the following school policies:

SEND Policy, Safeguarding Policy, Off-site visits policy, Complaints Policy, Personal and Intimate Care Policy

This policy was developed with staff, representatives from the governing body and healthcare professionals and will be reviewed annually.

Definitions of medical Conditions

Pupils' medical needs may be broadly summarised as being of two types:-

Short-term affecting their participation at school because they are on a course of medication (please see Administering Medication at School Policy)

Long-term potentially limiting access to education and requiring on-going support, medicines or care while at school to help them to manage their condition and keep them well, including monitoring and intervention in emergency circumstances. It is important that parents feel confident that the school will provide effective support for their child's medical condition and that pupils feel safe.

Some children with medical conditions may be considered disabled. Where this is the case governing bodies **must** comply with their duties under the Equality Act 2010. Some may also have special educational needs (SEN) and may have an Education, Health and Care Plan (EHCP). Where this is the case this policy should be read in conjunction with the 0-25 SEND Code of Practice and the school's SEND Policy and the individual healthcare plan will become part of the EHCP.

The statutory duty of the governing body

The governing body remains legally responsible and accountable for fulfilling their statutory duty for supporting pupils at school with medical conditions. The governing body of Joydens Wood Infant School fulfil this by:-

- o Ensuring that every endeavour is made to support pupils with medical conditions. In doing so we will ensure that such children can access and enjoy the same opportunities at school as any other child;
- o Taking into account that many medical conditions that require support at school will affect quality of life and may be life-threatening. Some will be more obvious than others and therefore the focus is on the needs of each individual child and how their medical condition impacts on their school life;
- o Ensuring that the arrangements give parents and pupils confidence in the school's ability to provide effective support for medical conditions, should show an understanding of how medical conditions impact on a child's ability to learn, as well as increase their confidence and promote self-care. We will ensure that staff are properly trained to provide the support that pupils need;
- o Ensuring that no child with a medical condition is denied admission, or prevented from taking up a place in school because arrangements for their medical condition have not been made. **However, in line with safeguarding duties, we will ensure that pupils' health is not put at unnecessary risk and reserve the right to refuse admittance to a child at times where it would be detrimental to the health of that child or others to do so;**
- o Ensuring that the arrangements put in place are sufficient to meet our statutory duties and ensure that policies, plans, procedures and systems are properly and effectively implemented;
- o Ensuring that the policy is reviewed regularly, accessible to parents and staff and includes details on how the policy will be implemented effectively, including a named person who has overall responsibility for policy implementation (see section below on policy implementation);
- o Ensuring that the policy sets out the procedures to be followed whenever the school is notified that a pupil has a medical condition (see section below on procedure to be followed when notifications is received that a pupil has a medical condition);
- o Ensuring that the policy covers the role of individual healthcare plans, and who is responsible for their development, in supporting pupils at school with medical conditions (see section below on individual healthcare plans);
- o Ensuring that the school policy clearly identifies the roles and responsibilities of all those involved in arrangements for supporting pupils at school with medical conditions and how they will be supported, how their training needs will be assessed and how and by whom training will be commissioned and provided (see section below on staff training and support);
- o Ensuring that the school policy covers arrangements for children who are competent to manage their own health needs and medicines (see section below on the child's role in managing their own medical needs);
- o Ensuring that the policy is clear about the procedures to be followed for managing medicines including the completion of written records (see section below on managing medicines on school premises);
- o Ensuring that the policy sets out what should happen in an emergency situation (see section below on emergency procedures);
- o Ensuring that the arrangements are clear and unambiguous about the need to support actively pupils with medical conditions to participate in school trips and visits, or in sporting activities, and not prevent them from doing so;
- o Considering whether to
 - develop transport healthcare plans in conjunction with the LA for pupils with life-threatening conditions who use home- to- school transport
 - Purchase and train staff in the use of defibrillators
- o Ensuring that the policy is explicit about what practice is not acceptable (see section on unacceptable practice);
- o Ensuring that the appropriate level of insurance is in place and appropriate to the level of risk (see section on Liability and Indemnity);
- o Ensuring that the policy sets out how complaints may be made and will be handled concerning the support to pupils with medical conditions (see section on complaints).

Policy implementation

The statutory duty for making arrangements for supporting pupils at school with medical conditions rests with the Governing Body. The Governing Body have conferred the following functions of the implementation of this policy to the staff below, however, the governing body remains legally responsible and accountable for fulfilling our statutory duty.

The overall responsibility for the implementation of this policy is given to Miss Rachel Hatley, Headteacher. She will also be responsible for the monitoring of individual healthcare plans.

Mrs Alison Patel, Office Supervisor and Paediatric First Aider, will be responsible, alongside parents/carers, for drawing up, implementing and keeping under review the individual healthcare plan for each pupil and making sure relevant staff are aware of these plans.

All school teaching staff will be responsible for preparing risk assessments for any school visits and other school activities outside of the normal timetable that their class is attending. These are to be submitted to the Deputy Headteacher and SENCO, Miss Emma Barnett, 1 week before the event is taking place.

All members of staff are expected to show a commitment and awareness of children's medical conditions and the expectations of this policy. All new members of staff will be inducted into the arrangements and guidelines in this policy upon taking up their post.

Procedure to be followed when notification is received that a pupil has a medical condition

This covers notification prior to admission, procedures to cover transitional arrangements between schools or alternative providers, and the process to be followed upon reintegration after a period of absence or when pupils' needs change. For children being admitted to Joydens Wood Infant School for the first time with good notification given, the arrangements will be in place for the start of the relevant school term. In other cases, such as a new diagnosis or a child moving to Joydens Wood Infant School mid-term, we will make every effort to ensure that arrangements are put in place within two weeks.

In making the arrangements, we will ensure that the focus is on the needs of each individual child and how their medical condition impacts on their school life. We aim to ensure that parents/carers and pupils can have confidence in our ability to provide effective support for medical conditions in school, so the arrangements will show an understanding of how medical conditions impact on the child's ability to learn, as well as increase their confidence and promote self-care.

We will ensure that staff are properly trained and supervised to support pupils' medical conditions and will be clear and unambiguous about the need to actively support pupils with medical conditions to participate in school trips and visits, or in sporting activities, and not prevent them in doing so. We will make arrangements for the inclusion of pupils in such activities with any adjustments as required unless evidence from a clinician such as a GP states that this is not possible. We will make sure that no child with a medical condition is denied admission or prevented from attending the school because arrangements for supporting their medical condition have not been made. **However, in line with our safeguarding duties, we will ensure that all pupils' health is not put at unnecessary risk. We will therefore not accept a child in school at times where it would be detrimental to the health of that child or others.**

Joydens Wood Infant School does not have to wait for a formal diagnosis before providing support to pupils. In cases where a pupil's medical condition is unclear, or where there is a difference of opinion, judgements will be needed about what support to provide based on available evidence. This would normally involve some form of medical evidence and consultation with parents/carers. Where evidence conflicts, some degree of challenge may be necessary to ensure that the right support can be put in place. These discussions will be led by Miss Rachel Hatley, Headteacher and following these discussions an individual healthcare plan will be written in conjunction with the parent/carers by Mrs Alison Patel.

Individual healthcare plans

Individual healthcare plans will help to ensure that Joydens Wood Infant School effectively supports pupils with medical conditions. They will provide clarity about what needs to be done, when and by whom. They will often be essential, such as in cases where conditions fluctuate or where there is a high risk that emergency intervention will be needed. They are likely to be helpful in the majority of other cases too, especially where medical conditions are long-term and complex. However, not all children will require one. The school, healthcare professional and parent/carer should agree, based on evidence, when a healthcare plan would be inappropriate or disproportionate. If consensus cannot be reached the Headteacher, Miss Rachel Hatley, is best placed to take a final view. A flow chart for identifying and agreeing the support a child needs and developing an individual healthcare plan is provided at appendix A.

Individual healthcare plans will be easily accessible to all who need to refer to them, while preserving confidentiality. Plans will capture the key information and actions that are required to support the child effectively. The level of detail within the plan will depend on the complexity of the child's condition and the degree of support needed. This is important because different children with the same health condition may require very different support. Where a child has SEND but does not have an EHC plan, their special educational needs should be mentioned in their individual healthcare plan.

Individual healthcare plans (and their review) should be drawn up in partnership between the school, parents/carers and a relevant healthcare professional eg school, specialist or children's community nurse, who can best advise on the particular needs of the child. Pupils should also be involved whenever appropriate. The aim should be to capture the steps which Joydens Wood Infant School should take to help manage their condition and overcome any potential barriers to getting the most from their education. Partners should agree who will take the lead in writing the plan, but responsibility for ensuring it is finalised and implemented rests with the school.

Joydens Wood Infant School ensures that individual healthcare plans are reviewed at least annually or earlier if evidence is presented that the child's needs have changed. They will be developed and reviewed with the child's best interests in mind and ensure that Joydens Wood Infant School assesses and manages risks to the child's education, health and social wellbeing, and minimises disruption. Where a child is returning to school following a period of hospital education or alternative provision, we will work with the local authority and education provider to ensure that the individual healthcare plan identifies the support the child will need to reintegrate effectively.

Template A provides a basic template for the individual healthcare plan, and although this format may be varied to suit the specific needs of each pupil, they should all include the following information

- o The medical condition, its triggers, signs, symptoms and treatments;
- o The pupil's resulting needs, including medication (dose, side effects and storage) and other treatments, time, facilities, equipment, testing, access to food and drink where this is used to manage their condition, dietary requirements and environmental issues eg crowded corridors, travel time between lessons;
- o Specific support for the pupil's educational, social and emotional needs – for example, how absences will be managed, use of rest periods or additional support in catching up with lessons, Play Therapy sessions;
- o The level of support needed (some children will be able to take responsibility for their own health needs) including in emergencies. If a child is self-managing their medication, this should be clearly stated with appropriate arrangements for monitoring;
- o Who will provide this support, their training needs, expectations of their role and confirmation of proficiency to provide support for the child's medical condition from a healthcare professional; and cover arrangements for when they are unavailable;
- o Who in the school needs to be aware of the child's condition and the support required;
- o Arrangements for written permission from parents/carers and the Headteacher, Miss Rachel Hatley, for medication to be administered by a member of staff, or self-administered by the pupil during school hours;
- o Separate arrangements or procedures required for school trips or other school activities outside of the normal school timetable that will ensure the child can participate eg, risk assessment;
- o Where confidentiality issues are raised by the parent/child, the designated individual to be entrusted with information about the child's condition; and
- o What to do in an emergency, including whom to contact, and contingency arrangements. Some children may have an emergency healthcare plan prepared by their lead clinician that could be used to inform development of their individual healthcare plan

Roles and responsibilities

Please refer to the section on policy implementation for the functions that have been delegated to different, named members of staff, at Joydens Wood Infant School.

In addition we can refer to the **Community Nursing Team** for support with drawing up Individual Healthcare Plans, provide or commission specialist medical training, liaison with lead clinicians and advice or support in relation to pupils with medical conditions.

Other **healthcare professionals, including GPs and paediatricians** should notify the Community Nursing Team when a child has been identified as having a medical condition that will require support at school. Specialist local health teams may be able to provide support, and training to staff, for children with particular conditions (eg asthma, diabetes, epilepsy)

Pupils with medical conditions will often be best placed to provide information about how their condition affects them. They should be fully involved in discussions, where appropriate, about their medical support needs and contribute as much as possible to the development of, and comply with, their individual healthcare plan. Other pupils will often be sensitive to the needs of those with medical conditions, and can, for example, alert staff to the deteriorating condition or emergency needs of pupils with medical conditions.

Parents/carers should provide the school with sufficient and up-to-date information about their child's medical needs. They may in some cases be the first to notify the school that their child has a medical condition. Parents are key partners and should be involved in the development and review of their child's individual healthcare plan, and may be involved in its drafting. They should carry out any action they have agreed to as part of its implementation, eg provide medicines and equipment and ensure they or another nominated adult are contactable at all times.

Local authorities are commissioners of school nurses for maintained schools and academies in Kent. Under Section 10 of the Children Act 2004, they have a duty to promote cooperation between relevant partners such as governing bodies of maintained schools, proprietors of academies, clinical commissioning groups and NHS England, with a view to improving the well-being of children with regard to their physical and mental health, and their education, training and recreation. KCC is currently consulting on the re-organisation of its Health Needs provision which will strengthen its ability to provide support, advice and guidance, including suitable training for school staff, to ensure that the support specified within individual healthcare plans can be delivered effectively. KCC will work with us to support pupils with medical conditions to attend full time.

Children with health needs who cannot attend school

Where pupils would not receive a suitable education in a mainstream school because of their health needs, the local authority has a duty to make other arrangements. Statutory guidance for local authorities sets out that they should be ready to make arrangements under this duty when it is clear that a child will be away from school for 15 days or more because of health needs (whether consecutive or cumulative across the year) [education for children with health needs who cannot attend school](#)

Providers of health services should cooperate with schools that are supporting children with medical conditions. They can provide valuable support, information, advice and guidance to schools, and their staff, to support children with medical conditions at school.

Clinical commissioning groups (CCGs) commission other healthcare professionals such as specialist nurses. They have a reciprocal duty to co-operate under Section 10 of the Children Act 2004 (as described above for local authorities). The local Health and Well-being Board provides a forum for the local authority and CCGs to consider with other partners, including locally elected representatives, how to strengthen links between education, health and care settings.

Staff training and support

Paediatric First Aid (2 days)

Carly Adams – Family Engagement Leader – Expires January 2022

Alison Patel – Office Supervisor – Expires January 2022

Appointed Person Emergency First Aid - Paediatric

Rachel Hately – Headteacher – Expires November 2021

Emma Barnett – DHT/SENCO – Expired March 2020 (to be renewed as soon as Covid-19 allows)

Joanna Harris – Early Years Lead – Expires November 2021

Claire Lawton – Music Teacher – Expires November 2021

Fiona Lee – Class Teacher – Expires November 2021

George Acland – Tollo Academy Sports Coach – Expires November 2021

Joanne Connelly – Cover Supervisor – Expires November 2021

Clare Fitzpatrick – Class Teacher – Expires November 2021

Trish Quinn – Catering Business Manager – Expires October 2021

Mirander Marshall – Cover Supervisor – Expires November 2021

Liz Meaney – Learning Support Assistant – Expired March 2020 (to be renewed as soon as Covid-19 allows)

First Aid at Work

Ellie East – Class Teacher – Expires June 2020 (to be renewed as soon as Covid-19 allows)

Basic First Aid for Schools with CPR (3 hrs)

Kerrie Freeman – Class Teacher – Expires October 2021

Amy Vinton – Class Teacher – Expires October 2021

Sandra Bialaszewski – Cover Supervisor – Expires October 2021

Julie Bratton – Learning Support Assistant – Expires October 2021

Tracy Porter – Learning Support Assistant – Expires October 2021

Julia Jordan – Office Assistant – Expires October 2021

Claire Towler – Learning Support Assistant – Expires October 2021

Named people for administering medicines:

Alison Patel – Office Supervisor

Julia Jordan – Office Assistant

Rachel Hately – Headteacher

Sue Hallam – School Business Manager

The following staff have received Specific/specialist training:

Epilepsy Awareness Training

Alison Patel 11/07/2018

Sue Hallam 11/07/2018

Julia Jordan 11/07/2018

Tracy Porter 11/07/2018

Liz Meaney 11/07/2018

George Acland 11/07/2018

Kerrie Freeman 18/09/2019

Amy Vinton 18/09/19

Fiona Lee 20/11/19

Clare Fitzpatrick 20/11/19

Joanna Harris 20/11/19

Ellie East 20/11/19

Emma Barnett 20/11/19

Carly Adams 20/11/19

Anaphylaxis Training 20/09/2019

Vicky Collins Julia Jordan

Alison Patel Fiona Lee

Joanne Connelly Joanna Harris

Charlotte Lonergan Clare Fitzpatrick

Claire Towler Rachel Hately

Linda Gwinnett Emma Barnett

Liz Meaney

Tanya Cooper

Tracy Porter

Hari Appalanaidu

Ellie East

Sue Hallam

Sandra Bialaszewski

Kerrie Freeman

Amy Vinton

Template E will be used to record staff training for administration of medicines and /or medical procedures.

All staff who are required to provide support to pupils for medical conditions will be trained by healthcare professionals qualified to do so. The training need will be identified by the healthcare professional during the development or review of the individual healthcare plan. We may choose to arrange training ourselves and will ensure that it remains up-to-date.

Training should be sufficient to ensure that staff are competent and have confidence in their ability to support pupils with medical conditions, and to fulfil the requirements set out in the individual healthcare plans. They will need an understanding of the specific medical conditions they are being asked to deal with, their implications and preventative measures.

Staff must not give prescription medicines or undertake healthcare procedures without appropriate training (updated to reflect any individual healthcare plans). A first aid certificate does not constitute appropriate training in supporting children with medical conditions. Healthcare professionals, including the school nurse, can provide confirmation of proficiency of staff in a medical procedure, or in providing medication (see template).

All staff will receive induction training and regular whole school awareness training so that all staff are aware of the school's policy for supporting pupils with medical conditions and their role in implementing the policy. Miss Rachel Hatley, Headteacher, will seek advice from relevant healthcare professions about training needs, including preventative and emergency measures so that staff can recognise and act quickly when a problem occurs.

The family of a child will often be key in providing relevant information to school staff about how their child's needs can be met, and parents will be asked for their views. They should provide specific advice, but should not be the sole trainer.

The child's role in managing their own medical needs

If, after discussion with the parent/carer, it is agreed that the child is competent to manage his/her own medication and procedures, s/he will be encouraged to do so. This will be reflected in the individual healthcare plan.

Wherever possible children will be allowed to carry their own medicines and relevant devices or should be able to access their medication for self-medication quickly and easily; these will be stored in the cupboard in the office to ensure that the safeguarding of other children is not compromised. Joydens Wood Infant School does also recognise that children who take their medicines themselves and/or manage procedures may require an appropriate level of supervision. If it is not appropriate for a child to self-manage, then relevant staff will help to administer medicines and manage procedures for them.

If a child refuses to take medicine or carry out a necessary procedure, staff should not force them to do so, but follow the procedure agreed in the individual healthcare plan. Parents will be informed so that alternative options can be considered.

Managing medicines on school premises and record keeping

At Joydens Wood Infant School the following procedures are to be followed:

- o Medicines should only be administered at school when it would be detrimental to a child's health or school attendance not to do so;
- o No child under 16 should be given prescription or non-prescription medicines without their parents written consent (see template B) - except in exceptional circumstances where the medicine has been prescribed to the child without the knowledge of the parents. In such cases, every effort should be made to encourage the child or young person to involve their parents while respecting their right to confidentiality;

- o We will not administer non-prescription medicines. If a child requires a non-prescription medicine during the course of the school day, their parent will be asked to attend the school site to provide the medication.
- o Where clinically possible, medicines should be prescribed in dose frequencies which enable them to be taken outside school hours;
- o Joydens Wood Infant School will only accept prescribed medicines, with written permission from parent/carer that are in-date, labelled, provided in the original container as dispensed from a pharmacist and include instructions for administration, dosage and storage. The exception to this is insulin which must be in-date, but will generally be available to schools inside an insulin pen or a pump, rather than its original container;
- o All medicines will be stored safely in the school office. Children should know where their medicines are at all times and be able to access them immediately, with adult supervision. During the school day this cupboard should remain unlocked. No child at Joydens Wood Infant School should be sent to access his/her medication alone without the supervision of an adult.
- o Medicines and devices such as asthma inhalers, blood glucose testing meters and adrenaline pens should be always readily available in the school office and not locked away. Asthma inhalers should be marked with the child's name.
- o During school trips the first aid trained member of staff will carry all medical devices and medicines required;
- o We will keep all controlled drugs that have been prescribed for a pupil securely stored and only named staff will have access. Controlled drugs should be easily accessible in an emergency. A record should be kept of any doses used and the amount of the controlled drug held in school;
- o Staff administering medicines should do so in accordance with the prescriber's instructions. Joydens Wood Infant School will keep a record (see template C and D) of all medicines administered to individual children, stating what, how and how much was administered, when and by whom. Any side effects of the medication to be administered at school should be noted. Written records are kept of all medicines administered to children. These records offer protection to staff and children and provide evidence that agreed procedures have been followed;
- o When no longer required, medicines should be returned to the parent/carer to arrange safe disposal. Sharps boxes should always be used for the disposal of needles and other sharps.

Emergency procedures

Miss Rachel Hatley, Headteacher, will ensure that arrangements are in place for dealing with emergencies for all school activities wherever they take place, including school trips within and outside the UK, as part of the general risk management process.

Where a child has an individual healthcare plan, this should clearly define what constitutes an emergency and explain what to do, including ensuring that all relevant staff are aware of emergency symptoms and procedures. Other pupils in the school should know what to do in general terms, such as informing a teacher immediately if they think help is needed.

If a child needs to be taken to hospital, staff should stay with the child until the parent arrives, or accompany a child taken to hospital by ambulance. Schools need to ensure they understand the local emergency services cover arrangements and that the correct information is provided for navigation systems.

What to do if a child has needs Medical Assistance

Needs Medication

Child states they are unwell or shows symptoms they are feeling unwell.



GREEN FORM & GREEN BAND

Adults in the school MUST:

- Follow the child's Care Plan and permission to administer medication
- Complete GREEN Form
- Add information in medical log book, ensure signed and dated
- Place a green band on the child with date, time and dosage.
- Walk back to class with the child and inform the teacher
- Pass GREEN form to class teacher
- GREEN form to go home

Parents MUST:

- Remove any bands before the child enters school the next day
- Advise the office of any changes to medication and care plans – teacher are NOT ALLOWED to accept this information on the door.
- Complete one/all of the following (as relevant) Care Plan, Risk Assessment and Permission to Administer Medication.
- Ensure any known side effects are on the child's care plan.
- Ensure any medication is prescribed by the doctor, we cannot accept it at school if it isn't.

Asthma

Any of the following things can happen singularly or simultaneously:

- Short of breath, Chest feels tight
- Wheezy, Coughing, Panicked/anxious
- Asking for their pump but displaying no symptoms of Asthma



PURPLE FORM & PURPLE BAND

Adults in the school MUST:

- Follow the child's Care Plan and permission to administer medication
- Complete PURPLE Form
- Add information in medical log book, ensure signed and dated
- Place a purple band on the child with date, time and dosage.
- Walk back to class with the child and inform the teacher
- Pass GREEN form to class teacher
- GREEN form to go home

Parents MUST:

- Remove any bands before the child enters school the next day
- Advise the office of any changes to medication and care plans – teacher are NOT ALLOWED to accept this information on the door.
- Complete one/all of the following (as relevant) Care Plan, Risk Assessment and Permission to Administer Medication.
- Ensure any known side effects are on the child's care plan.
- Ensure any medication is prescribed by the doctor, we cannot accept it at school if it isn't.
- Ensure that any child who has asthma has a minimum of ONE in date pump on site in the event of an emergency occurred.

IF IN DOUBT SEEK ADVICE

Day trips, residential visits, and sporting activities

We will actively support pupils with medical condition to participate in day trips, residential visits and sporting activities by being flexible and making reasonable adjustments unless there is evidence from a clinician such as a GP that this is not possible.

We will always conduct a risk assessment so that planning arrangements take account of any steps needed to ensure that pupils with medical conditions can be included safely. This will involve consultation with parents/carers and relevant healthcare professions and will be informed by Health and Safety Executive (HSE) guidance on school trips.

Other issues for consideration

Where a pupil uses home-to-school transport arranged by the LA and they also have a medical condition which is life-threatening, we will share the pupil's individual healthcare plan with the local authority.

There is a defibrillator on site and a number of staff are trained to administer it. It is located in the centre of the main corridor in between The Blue Room/Library.

Once regulations have changed the Governing Body will consider whether to hold asthma inhalers on site for emergency use.

Unacceptable practice

Although staff at Joydens Wood Infant School should use their discretion and judge each case on its merit with reference to the child's individual healthcare plan, it is not generally acceptable practice to:

- o Prevent children from easily accessing their inhalers and medication and administering their medication when and where necessary;
- o Assume that every child with the same condition requires the same treatment;
- o Ignore the views of the child or their parents/carers; or ignore medical evidence or opinion (although this may be challenged);
- o Send children with medical conditions home frequently or prevent them from staying for normal school activities, including lunch, unless this is specified in their individual healthcare plans;
- o If the child becomes ill, send them to the school office or medical room unaccompanied or with someone suitable;
- o Penalise children for their attendance record if their absences are related to their medical condition, eg hospital appointments;
- o Prevent pupils from drinking, eating or taking toilet breaks whenever they need to in order to manage their medical condition effectively;
- o Require parents/carers, or otherwise make them feel obliged, to attend school to administer medication or provide medical support to their child, including with toileting issues. No parent should have to give up working because the school is failing to support their child's medical needs; or
- o Prevent children from participating, or creating unnecessary barriers to children participating in any aspect of school life, including school trips, eg by requiring parents to accompany the child.

Liability and indemnity

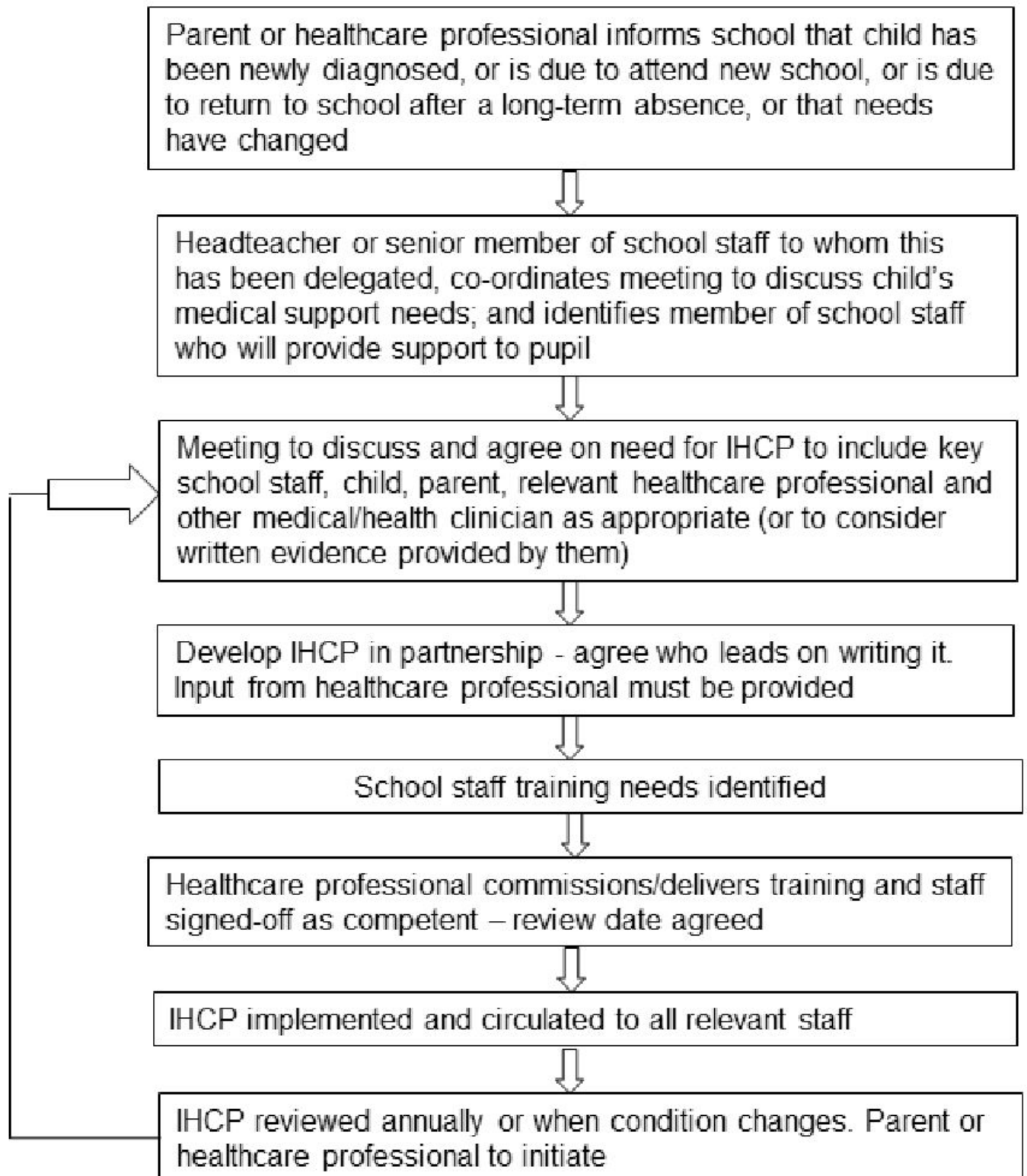
The School Insurance is with Zurich. There is a policy for liability in place for £1,000,000.

Complaints

Should parents/carers be unhappy with any aspect of their child's care at Joydens Wood Infant School, they must discuss their concerns with the school. This will be with the child's class teacher in the first instance, with whom any issues should be addressed. If this does not resolve the problem or allay the concern, the problem should be brought to a member of Senior Leadership Team, who will, where necessary, bring concerns to the attention of the Headteacher. In the unlikely event of this not resolving the issue, the parent/carer must make a formal complaint using the Joydens Wood Infant School Complaints Procedure.

Policy written September 2020 by E. Barnett
To be reviewed: September 2021

Model process for developing individual healthcare plans



Template A: individual healthcare plan



HEALTH CARE PLAN

Medical condition [office use]

PERSONAL DETAILS

Name of Child/Young Person:		INSERT PHOTO OF CHILD HERE
Date of Birth:	_____	
NHS No:	_____	
Date Care Plan Completed:	_____	
Review Date if Applicable:	_____	
Parents/carers are reminded of the importance of informing the school of any changes in treatment/medication or ongoing concerns/changes. Please sign here to confirm your understanding/agreement to this:		
Parent/Carer:	_____	Date _____

CONTACT INFORMATION

Family Contact 1	Family Contact 2
Name:	Name:
_____	_____
Phone No: (Home)	Phone No: (Home)
_____	_____
(Work):	(Work):
_____	_____
(Mobile):	(Mobile):
_____	_____
Relationship:	Relationship:
_____	_____

GP Name:	
Telephone Number:	

Consultant Name:	
Telephone Number:	

Note for parents:

- **CONFIDENTIALITY:** For reasons of safeguarding, this form will be displayed on a notice board in the staff room/kitchen;
- **Copies held by:** Parents/School

MEDICAL CONDITION/DIAGNOSIS:

Regular Medication:

DESCRIPTION OF CONDITION INCLUDING SYMPTOMS:

CARE TREATMENT TO BE GIVEN WHEN IN THE CARE OF THE SCHOOL:

DESCRIPTION OF WHAT CONSTITUTES AN EMERGENCY FOR YOUR CHILD AND ACTION TO BE TAKEN IF THIS OCCURS:

In the event emergency services are called, medication and all paperwork should be handed to a paramedic upon their arrival.

SPECIAL CONSIDERATIONS: (discuss with parents and record below, eg dietary needs, activity precautions, restrictions)

In the event of a child requiring their asthma pump, the Paediatric First Aider in the office will be radioed and the inhaler brought to the child.

FOR CHILDREN WHO REQUIRE AN EPI PEN/JEXT PEN, CAN A SECOND DOSE BE GIVEN?
YES/NO

IF **YES**, STATE HOW LONG AFTER THE FIRST DOSE _____ minutes

We the undersigned agree to this health care plan:

Parent/carer		Headteacher/other	
Name:		Name:	RACHEL HATELY
Signature:		Signature:	
Date:		Date:	

Spreadsheet

CPOMS

Template B: parental agreement for setting to administer medicine



Agreement to Administer Medication

We (Joydens Wood Infant School) will administer medication to your child under the following conditions:

- You have requested us to administer the medication under loco-parentis and we are undertaking this outside of the school's policy and procedures
- That you understand that in the event your child is unwell or has a reaction to the medication that no liability or responsibility resides with the school
- That you understand this is not in keeping with the school's policy or DfE requirements

PERSONAL DETAILS

Name of Child/Young Person:	
Date of Birth:	
Class:	

MEDICATION

Name/type of medication:	
Expiry date:	
Dose/method:	
Timing:	
Special precautions:	
Procedure to take in an emergency/what constitutes an emergency:	
Additional information:	

AUTHORISATION

Parent/carer		School signatory	
Name:		Name:	
Signature:		Signature:	
Date:		Date:	

REVIEW DATE: _____
(if applicable)

Spreadsheet
CPOMS

Template D: record of medicine administered to all children



Record of medicines administered to all children

Date	Child's name	Time	Name of medicine	Dose given	Any reactions	Signature of staff	Print name of staff

Template E: staff training record – administration of medicines and/or medical procedures



Record of staff training

Date	Name	Course attended	Link to School Improvement/ purpose of training	Venue	Cost